



Fact Sheet

[WWW.RHINOPLAINS.CO.ZA](http://WWW.RHINOPLAINS.CO.ZA)

YOUR PRIVATE WILDERNESS AWAITS

# Discover Rhino Plains - an Unforgettable Private Game Lodge

Discover Rhino Plains Lodge, an exclusive retreat nestled on the northern edge of the renowned Welgevonden Private Game Reserve. This luxurious lodge offers an exceptional safari experience within a Big 5 game reserve, surrounded by the untouched beauty of the African wilderness. The reserve is framed by the majestic Waterberg Mountains and is home to an incredible diversity of wildlife, including over 300 bird species, 129 mammal species, and 2000 plant species. As part of the UNESCO-listed Waterberg Biosphere Reserve, a recognized World Heritage Site, guests are immersed in a truly unique ecosystem.

Conveniently located just a three-hour drive from Johannesburg and Pretoria, our lodge provides the perfect getaway in a malaria-free zone, ensuring both safety and serenity for an unforgettable African adventure.







YOUR ADVENTURE STARTS HERE

## An Immersive South African Experience

Rhino Plains Lodge offers an exclusive and intimate experience, with a maximum of just 10 guests per night, ensuring privacy and personalized service. Our five standalone chalets are designed for ultimate comfort. This serene and romantic sleeping environment makes for a restful and peaceful getaway with all conveniences, ensuring a seamless blend of comfort and privacy. Every aspect of the chalet's design is thoughtfully crafted to offer a peaceful retreat, allowing guests to relax and fully immerse themselves in the tranquil beauty of the views.

Rhino plains is fully self sufficient and operates on its own Solar power. Clean and clear borehole water is used in the lodge straight from the heart of Waterbury. It also boasts a large and efficient grey water system that is the watering source for the gardens.

# Rhino Plains Map



# King/Twin Suite (50 sqm)

1 JAN 2025 – 31 DEC 2025

**R 5 950 per person sharing**

**R 7 950 single supplement**

(No children under 18)

Step into refined wilderness living with the King/Twin Suite, featuring a splash pool with a deck. The King/Twin Suite places you in the heart of nature with all the comforts of a premium stay.

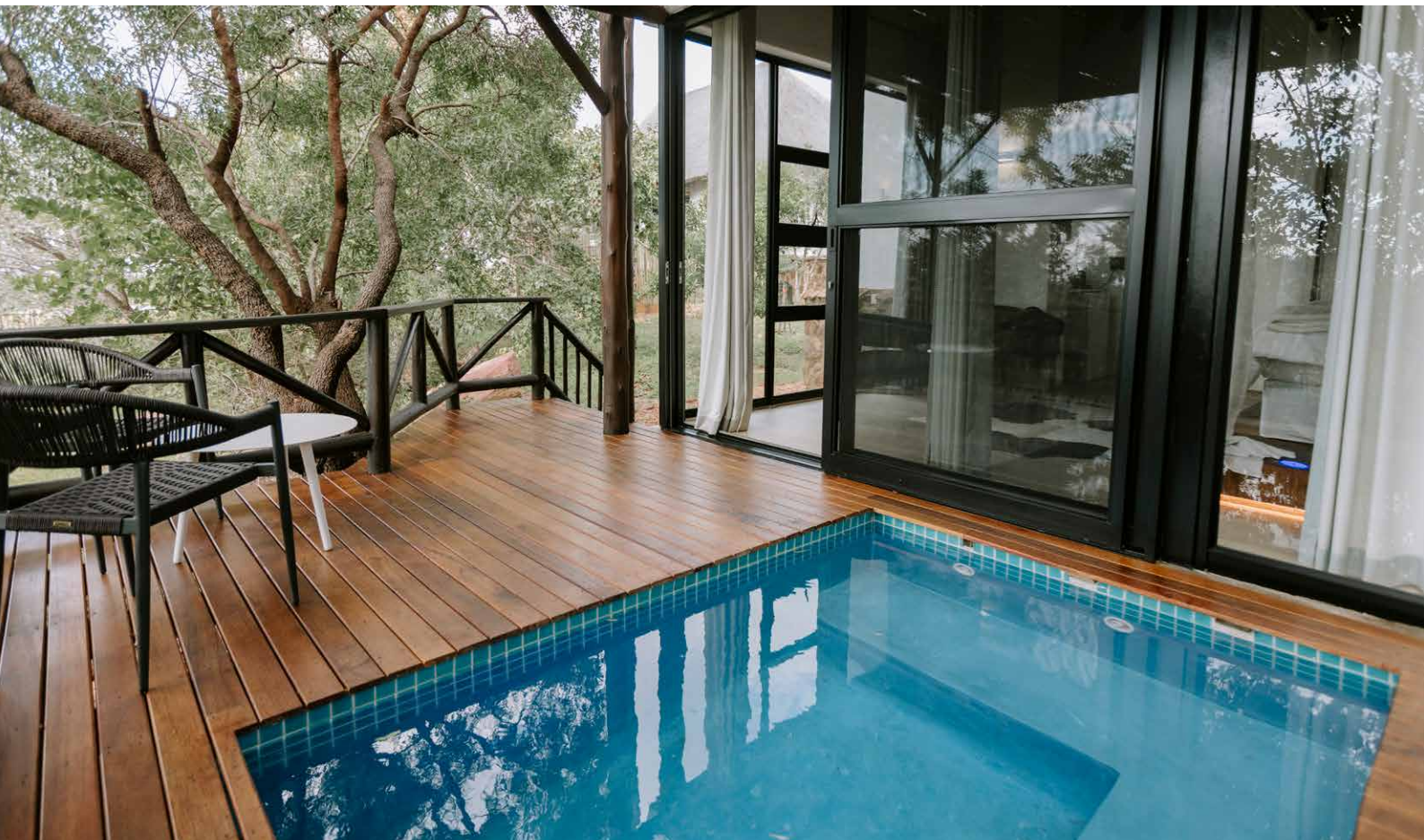
---

							
King bed	Shower	Bath	Air conditioning	Nespresso coffee machine	Mini bar	Splash pool	Wifi

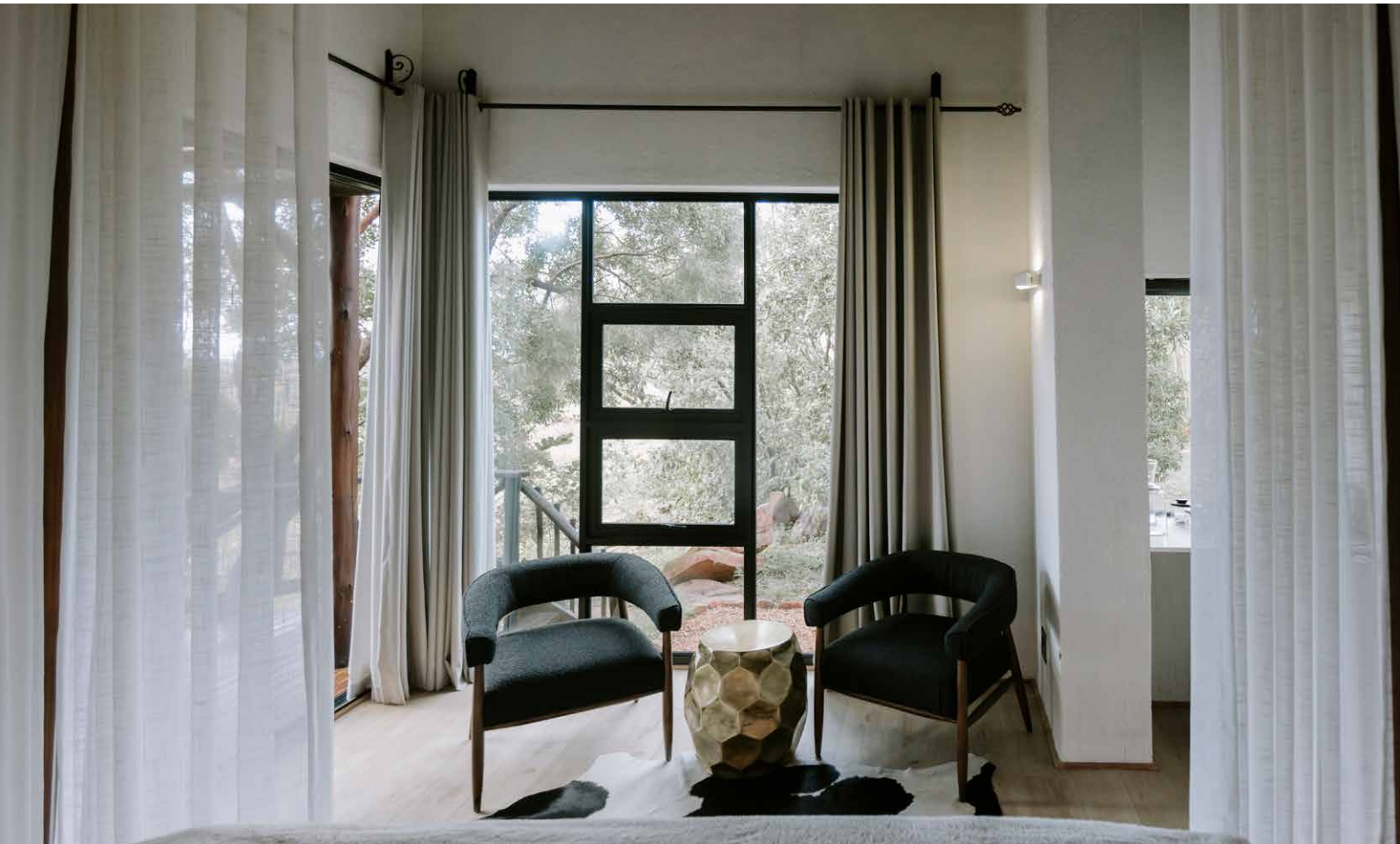
---

**Price includes:**

3 Meals daily | Snacks | Beverages | 2 Game drives per day

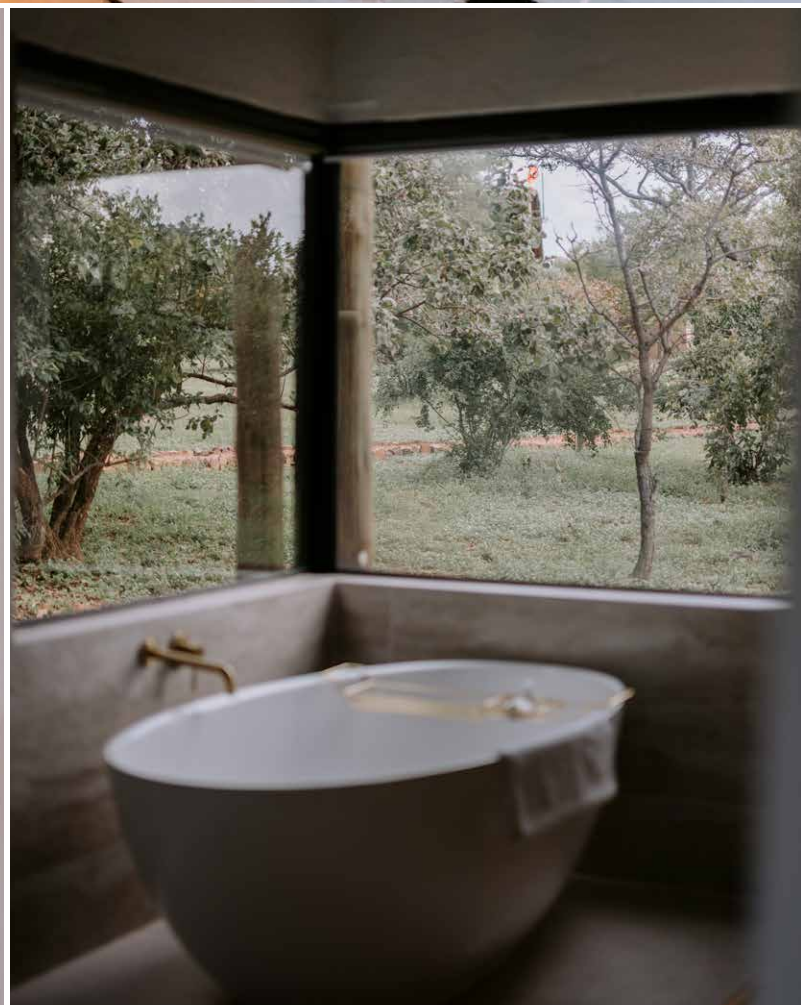














# King/Twin Suite (50 sqm)

1 JAN 2025 – 31 DEC 2025

**R 5 950 per person sharing**

**R 7 950 single supplement**

(No children under 18)

Discover eco-luxury at the King/Twin Suite, featuring a splash pool thoughtfully designed for both relaxation and adventure.

---

							
King bed	Shower	Bath	Air conditioning	Nespresso coffee machine	Mini bar	Splash pool	Wifi

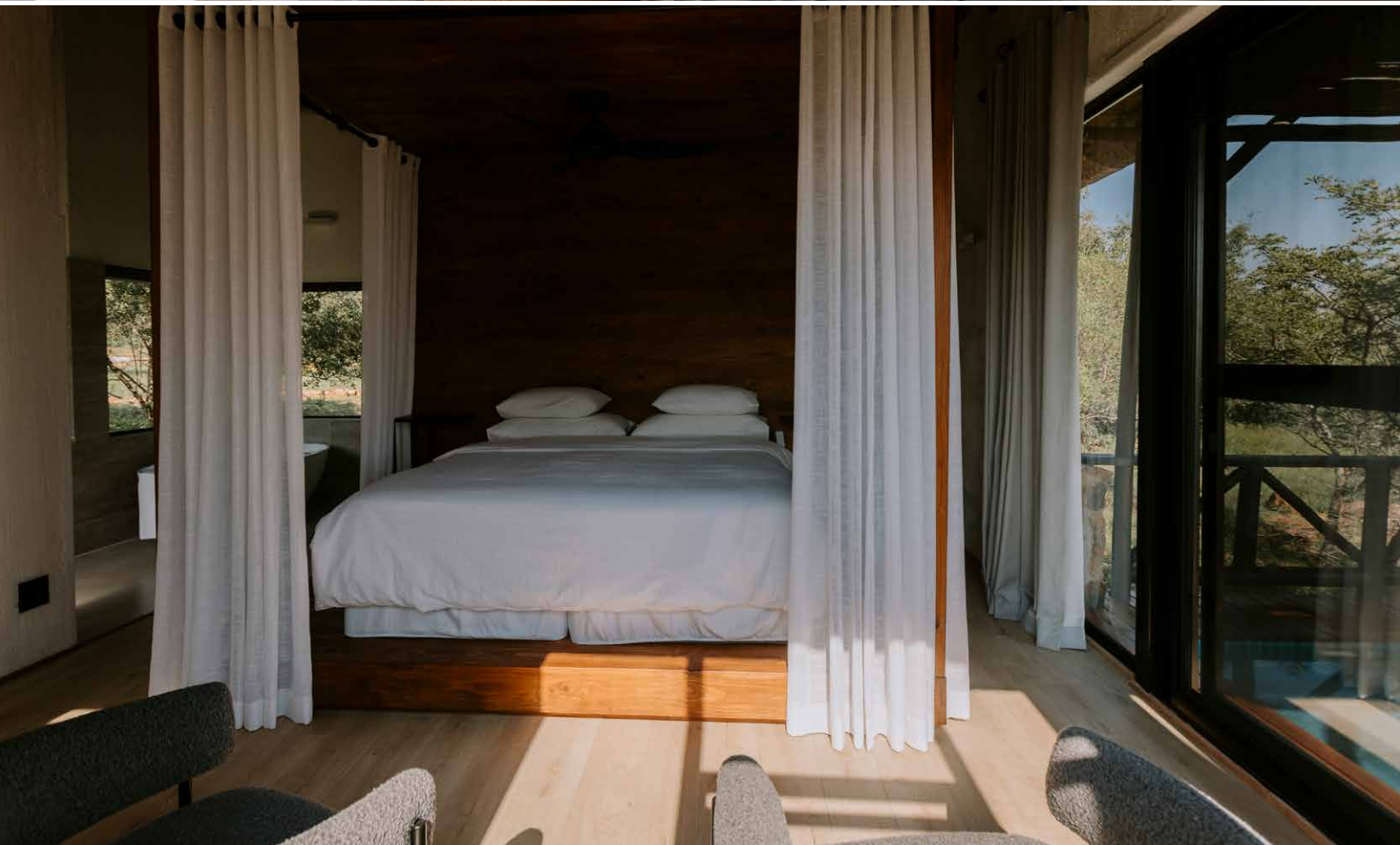
---

**Price includes:**

3 Meals daily | Snacks | Beverages | 2 Game drives per day











# Executive King Suite (80 sqm)

1 JAN 2025 – 31 DEC 2025

**R 7 950 per person sharing**

**R 9 995 single supplement**

(No children under 18)

Embrace nature in comfort at the Executive King Suite, featuring a splash pool, expansive sun deck, and panoramic waterhole views.



King bed



Shower



Bath



Air  
conditioning



Nespresso  
coffee  
machine



Mini bar



Splash pool



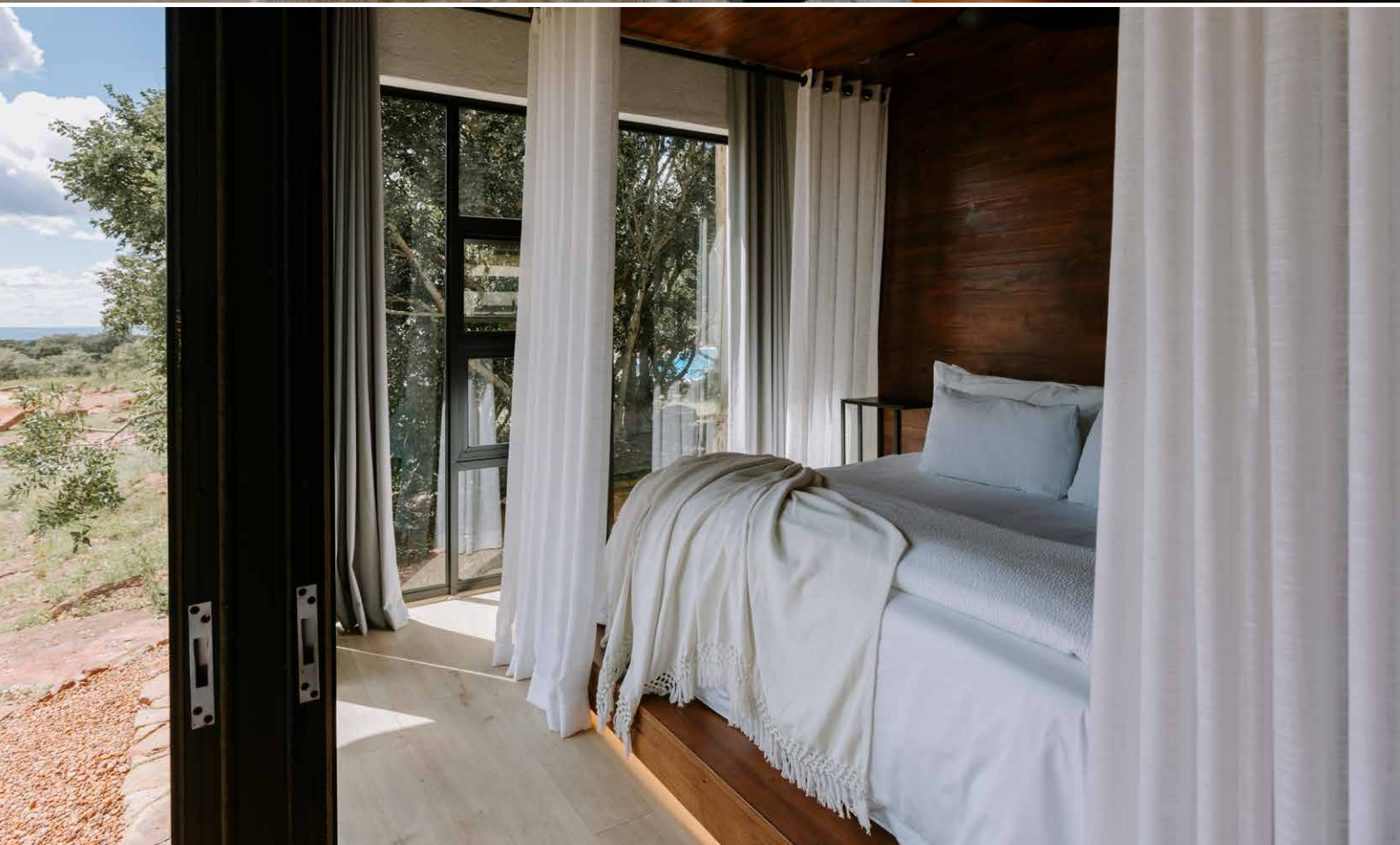
Wifi

## Price includes:

3 Meals daily | Snacks | Beverages | 2 Game drives per day













# Honeymoon Suite (80 sqm)

1 JAN 2025 – 31 DEC 2025










**R 9 550 per person sharing**

**R 13 995 single supplement**

(No children under 18)

The Honeymoon Suite blends modern design with nature, featuring a large pool with jacuzzi, expansive sun deck, elevated, outside deck with daybed offering unbelievable expansive views, and panoramic waterhole views.

---

								
King bed extra length	Shower	Bath	Air conditioning	Nespresso coffee machine	Mini bar	Jacuzzi	Large pool	Wifi

---

**Price includes:**

3 Meals daily | Snacks | Beverages | 2 Game drives per day

















Your Private  
Wilderness Awaits



INFO@RHINOPLAINS.CO.ZA | WWW.RHINOPLAINS.CO.ZA